

TRIVPOINT ▲ TRIVPOINT ▲ TRIVPOINT ▲ TRIVPOINT

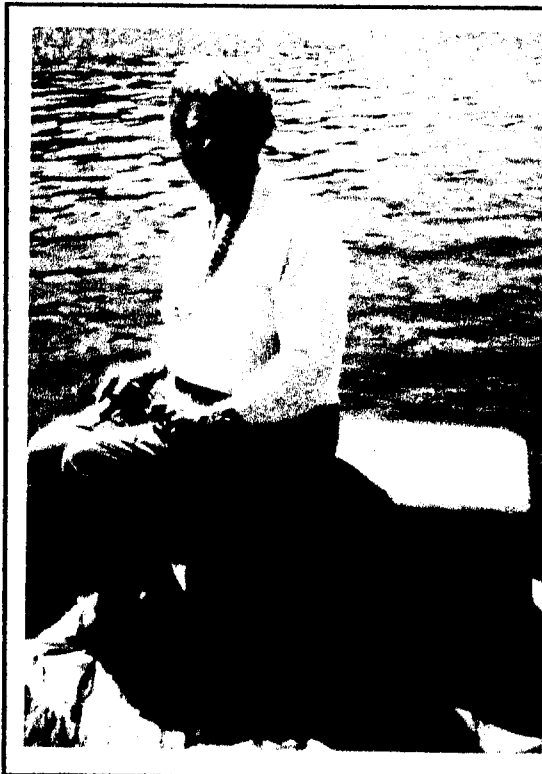
NY
—
PA | NJ

NEW YORK - PENNSYLVANIA - NEW JERSEY

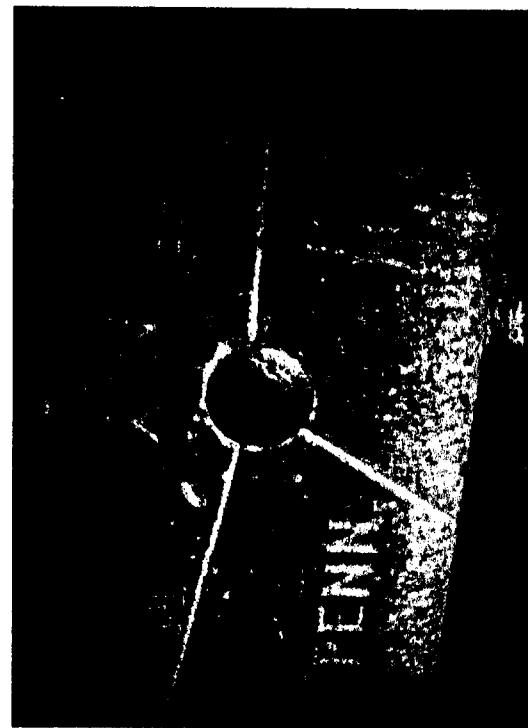
DATE VISITED: April 24, 1994

ACCESS ROUTE: From Interstate 84, exit #1, in Tristates, NY, proceed N on US 6 across the bridge over Neversink River. Just after the bridge, turn L on South Street, and L again into Laurel Grove Cemetery. Proceed on gravel and dirt roads to the parking area at the extreme W end of the peninsula, beyond the cemetery. A large NY - NJ boundary monument is on high ground, under the Interstate bridge. Tri State Rock is at the water's edge.

The inscription on the NJ side of the 1882 monument is as follows: "SOUTH 64° WEST 72 ¼ FEET FROM THIS IS THE TRI STATE ROCK WHICH IS THE NORTHWEST END OF THE NEW YORK AND NEW JERSEY BOUNDARY, AND THE NORTH END OF THE NEW JERSEY AND PENNSYLVANIA BOUNDARY". On the NY side it says, "THE CORNER BETWEEN NEW YORK AND PENNSYLVANIA IS IN THE CENTER OF THE DELAWARE RIVER 475 FEET DUE WEST OF THE TRI STATE ROCK". This latter point is marked X on the map.



Joyce Parsell sitting on the tri-state stone.



The tri-state stone with USGS marker at the center.